



# Associated Colleges of Illinois

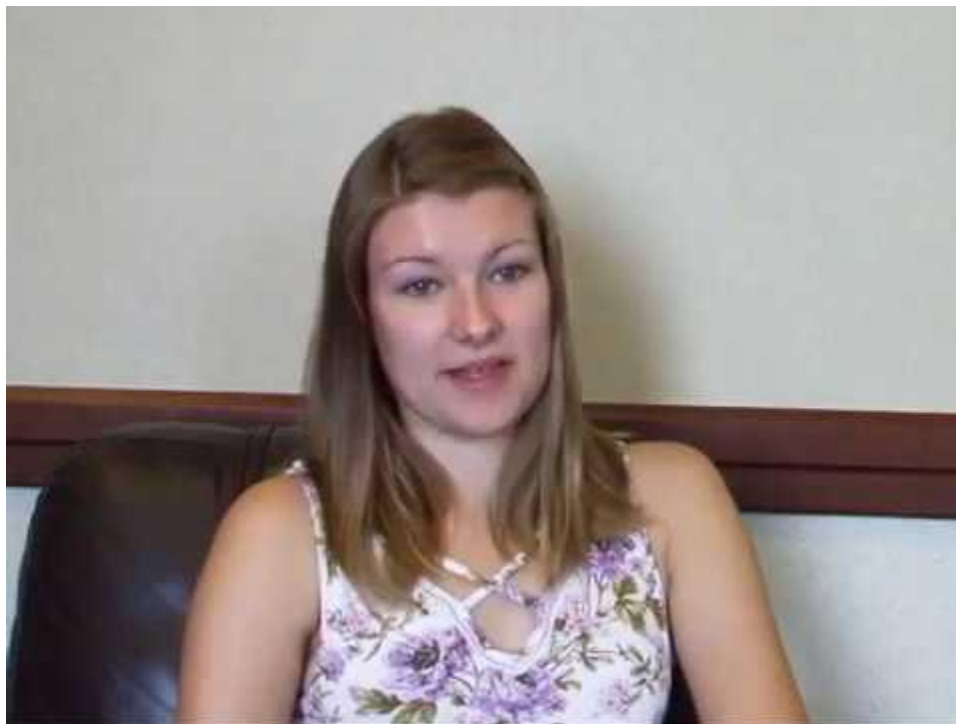
**Alexis Gregorash**  
**University of St. Francis**  
**ACI General Scholarship**



Lexi Gregorash attends the [University of St. Francis](#) in her hometown of Joliet, Illinois. Initially, she thought she wanted to be a teacher, and she knew USF has a great education program. In her first year at USF, Gregorash took a general psychology course. She enjoyed it so much that she changed to major to psychology. She remained at USF because of its small classes, plus staff and faculty that always were helpful to students, she says.

"I decided that I wanted to continue in psychology and then move towards counseling, mainly because I have a desire to let others know that there's someone there who generally cares and wants to listen to them," she says. "When I graduate from USF, I want to go to grad school to get my master's in clinical mental health counseling." From there, she hopes to become a licensed professional counselor and continuing advancing in the profession to licensed clinical professional counselor.

[Click to see video!](#)



Gregorash, a single mother of a three-year-old, finances her college education with federal grants and loans, plus two scholarships, including an ACI General Scholarship. "It's helped me

tremendously this year," she says. "For one of my loans, I didn't get as much as I had last year. So, I was kind of short on funds, and the ACI scholarship was one of my larger scholarships. It's definitely helped out a lot, so I don't have to try to scramble or collect money or set up a payment plan."

"I'm very grateful that I received the scholarship because it'd be very difficult to finish financing my last year here," she says. "Scholarships definitely help students to continue pursuing their career goals, their degrees and what they want to do here."

In addition to being a student at USF, Gregorash is a psychology tutor, a member of the university's Psychology Club, and she works in the USF Financial Aid Services office.